

PORTFOLIO

CAM SANCHEZ

camille.sanchez@su.suffolk.edu | (978)674-9575

ABOUT ME



Master of Interior Architecture Student at Suffolk University with experience in Fashion Design as it relates to color theory, materials, and preserving in-process quality. A willing and innovative collaborator with effective communication skills and a passion for understanding the depth of functionality and the human experience in relation to the spaces in which we live. Special interests include hospitality design, organic architecture, and sustainable building

TABLE OF CONTENTS

RESUME	4
COMMERCIAL DESIGN - FITNESS CENTER	5
LIVING SPACE DESIGN - PUEBLO REVIVAL	6
LIVING SPACE DESIGN - 1970s FAMILIARITY CONCEPT	7
OFFICE SPACE DESIGN - 1970s REFRESH	10
TRADE CENTER CONCEPT	12
APARTMENT RE-DESIGN	15
FASHION DESIGN - HOEM	16
WAYFINDING	17
FASHION DESIGN	18
FURNITURE DESIGN	19
ACCESSORY DESIGN	20

CAMILLE SANCHEZ

EXPERIENCE

Charles River Apparel | Quality Specialist 11/2021-4/2023

- Ensured inspection standard adherence by managing overseas inspection partner.
- reports and instituting a corrective action plan for the supplier.
- Conducted daily routine and non-routine analyses on in-process production, inspections as they relate to raw materials, development samples, and finished goods.
- Produced visual marketing decks for photoshoots including styling and model management.
- Monitored style quality as it transferred to print and digital media.
- Created technical pack and technical flat foundations with on-spec construction and grading.
- Gained proficiency in testing requirements and differentiation between knit and woven textiles.

Proenza Schouler | Design Intern— White Label 07/2020-11/2020

- Created and improved technical flats for Spring/Summer 2021 season development
- Compiled concept trend research and prepared visual aids line sheets for concept development

Midori Linea | Marketing and Graphic Design Assistant 5/2020-10/2020

- Styled and photographed product for high-profile brand campaigns and NYFW
- Designed transferable and sustainable newsletter format for weekly delivery.
- Steadily improved user experience on Shopify website using customer feedback for on-going marketing.
- Created strategic ad sets that increased social media reach.

EDUCATION

Suffolk University, 2023-MAY 2025 Master's in Interior Architecture

Lasell University, 2017-2021 B.A. in Fashion Design and Production, Fashion Communications minor

SKILLS

CAD: SketchUp | Revit | AutoCAD
LectraModaris | Kaledo

Adobe: | Adobe Photoshop | Adobe Illustrator
Adobe InDesign

Microsoft Office: Excel | Word | PowerPoint

Trend Forecasting | Market Research
Visual board development | Editorial Styling
Content Marketing | Quality Assurance |
Spanish

AFFILIATIONS

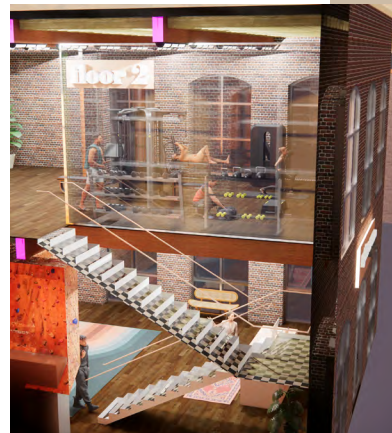
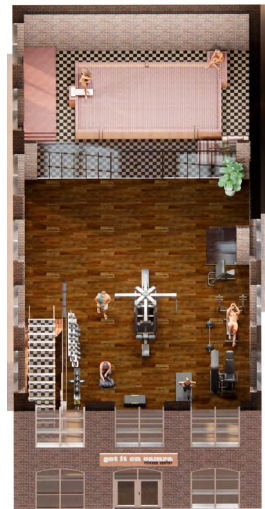
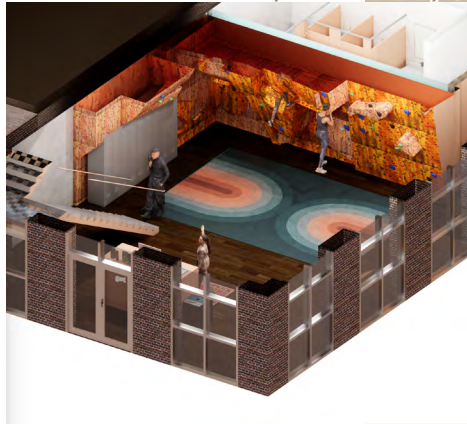
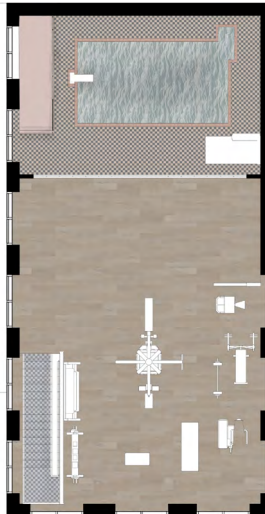
ASID New England
AIAS
IDS New England
IIDA New England
Interior Design Collective, Suffolk University

RESUME

GOT IT ON CAMRA

ADOBE PHOTOSHOP, ENSCAPE, SKETCHUP, AUTOCAD

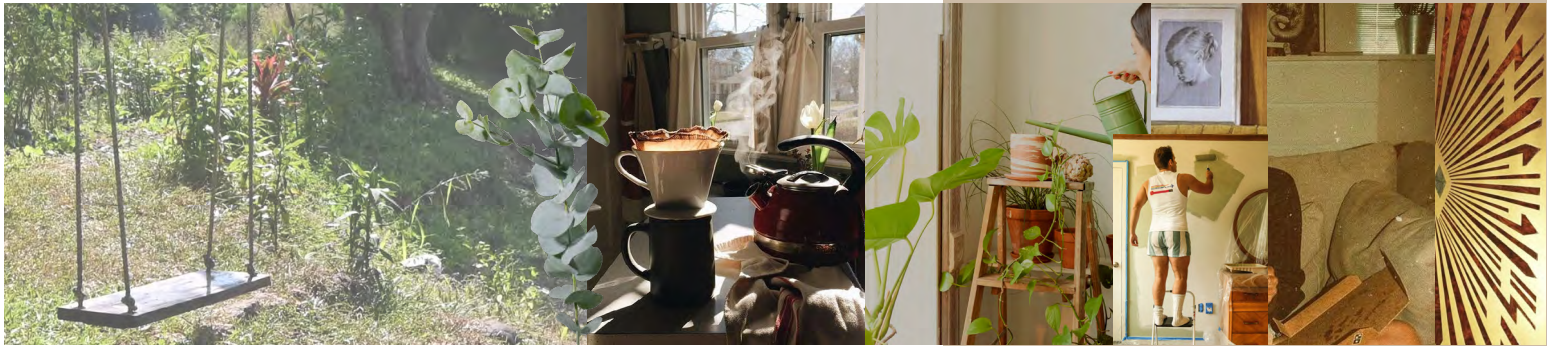
COMMERCIAL DESIGN FITNESS CENTER CONCEPT



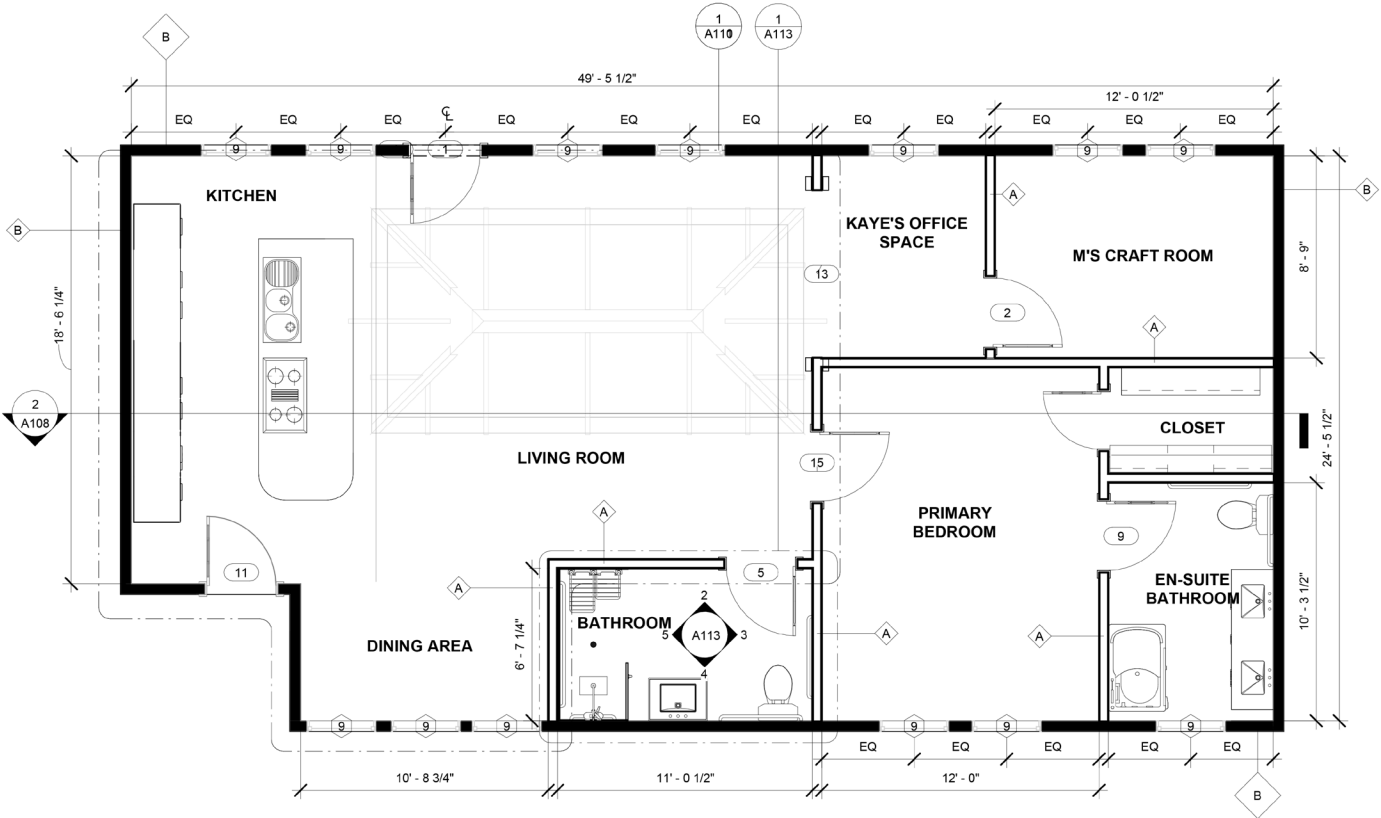
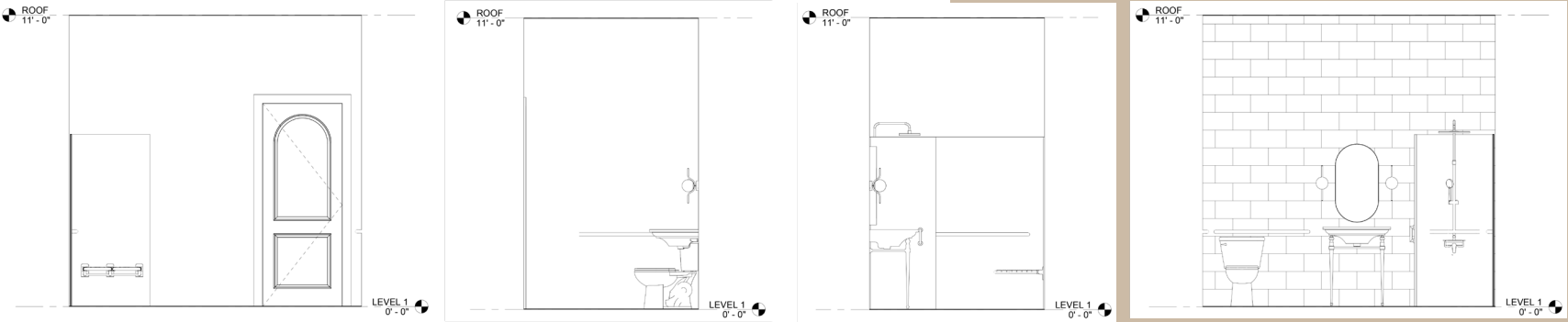


LIVING SPACE DESIGN 1970S FAMILIARITY CONCEPT

LIVING SPACE DESIGN
1970S FAMILIARITY CONCEPT



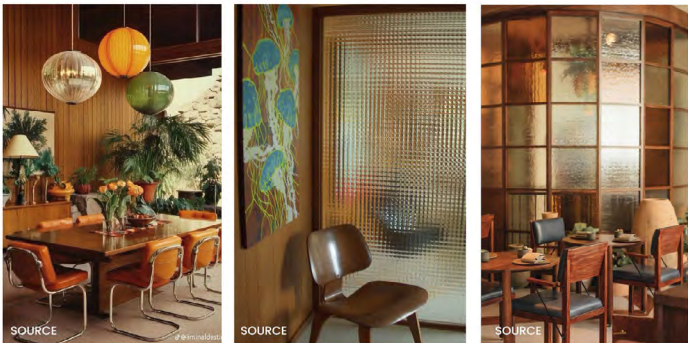
LIVING SPACE DESIGN
1970S FAMILIARITY CONCEPT



OFFICE SPACE DESIGN

1970S REFRESH

THEME



DESIGN STATEMENT

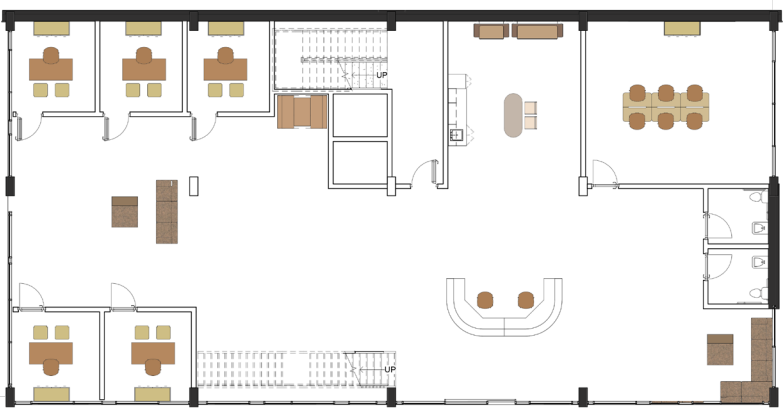
The overall theme for the space is inspired by the desire for the office to elicit personality and "feeling." Moving away from the corporate branded look, this layout draws inspiration from a 1970s color palette using hues and textures commonly found in nature to foster a sense of oneness and presence within the space. Many of the furniture items can be likened to modern takes on key historic pieces such as the Cesca chair and Stickley desks.






















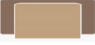





In the design, I have also incorporated various points of refuge that are not limited to the office such as the Hightower booth and the OFS LeanTo systems.

SUSTAINABILITY

With sustainability becoming increasingly more important, this concept incorporates solely systems that are environmentally friendly.

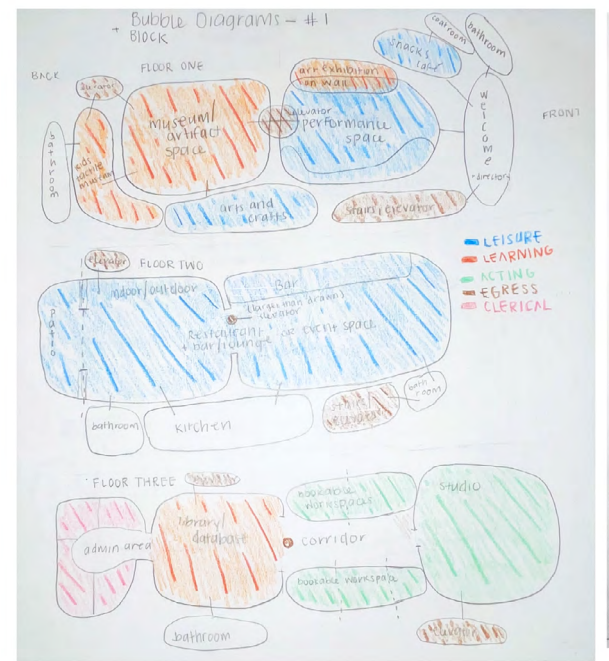
This goes beyond materials used and also addresses long term effects on it's users. Along with this, the design style of each piece is timeless in such a way that it will age well and remain current for years to come.



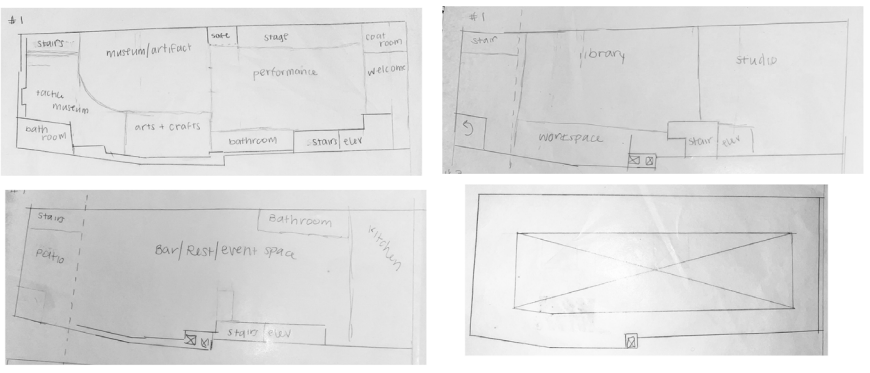
FLOOR PLAN ICON	IMAGE	MODEL NAME	MANUFACTURER	COLOR	TYPE	QTY	UNIT COST	TOTAL	SUSTAINABILITY NOTE	CSI Specification	PRODUCT URL
		Highline Fifty Credenza	DatesWeiser	Rift American White Oak, Natural	STORAGE	6	\$15,770	\$94,620	Responsibility harvested materials certified by the Forest Stewardship®	12 51 16 – Case Goods	https://www.knoll.com/product/highline-fifty-storage-collection-datesweiser?section=design
		Rockwell Unscripted® Sawhorse Workbench	KNOLL	Rustic Walnut	TABLES	3	\$5,295	\$15,885	certified Clean Air GOLD FSC® Certified	12 51 23 – Office Tables	https://www.knoll.com/product/rockwell-unscripted-sawhorse-workbench?section=design
		PopUp Table, Racetrack	Haworth	Maple worktop with Smooth Plaster base	TABLES	1	\$2,193	\$2,193	FSC® Certified GREENGUARD Certified Healthier Hospitals Initiative	12 51 23 – Office Tables	https://b2b.haworth.com/product-catalog/product/single/popup-table-racetrack
		Mex-Hi WIDE TWO SEAT SOFA WITH LEFT ARM, PENINSULA	Haworth	DIVINA MELANGE 3 516	SEATING	1	\$12,900	\$12,900	cushions are made of polyurethane foam with 100% recycled PET fiber	12 52 19 – Upholstered Seating	https://b2b.haworth.com/product-catalog/product/single/mex-hi-modular
		Mex-Hi THREE SEAT SOFA WITH ARMS	Haworth	DIVINA MELANGE 3 517	SEATING	2	\$16,790	\$33,580	cushions are made of polyurethane foam with 100% recycled PET fiber	12 52 19 – Upholstered Seating	https://b2b.haworth.com/product-catalog/product/single/mex-hi-modular
		Mex-Hi OTTOMAN WITH WOOD TRAY	Haworth	American Walnut tray with DIVINA MELANGE 3 517 ottoman	SEATING	2	\$4,295	\$8,590		12 52 19 – Upholstered Seating	https://moderplanet.com/casina-mex-hi-ottoman.html
		Knoll Pollock Executive Chair	KNOLL	Volo Leather, Tan	SEATING	13	\$3,059	\$39,767	certified Clean Air GOLD	12 52 23 – Office Seating	https://www.knoll.com/product/brno-chair-tubular
		Brno Chair Tubular	KNOLL	Classic Boucle, Flax	SEATING	10	\$2,576	\$25,760	certified Clean Air GOLD	12 52 23 – Office Seating	https://www.knoll.com/product/brno-chair-tubular?section=design
		ADD	Lammhults	Wood w/ Chrome Legs	SEATING	2	\$1,910	\$3,820	NORDIC ECO-LABEL	13 52 23 – Office Seating	https://www.lammhults.se/products/chairs-armchairs/add#variations
		Height Adjustable Base for 30" Deep Executive Desk	KNOLL	Rustic Walnut	TABLES	5	\$9,268	\$46,340	BIFMA level® certified LEED	12 59 23 – Desk System Furniture	https://www.knoll.com/product/teff-profiles-height-adjustable-desks?section=design
		Executive Desk Top 30" Deep	KNOLL	Rustic Walnut	TABLES	5	\$8,76	\$4,380	BIFMA level® certified LEED	13 59 23 – Desk System Furniture	https://www.knoll.com/product/teff-profiles-height-adjustable-desks?section=design
		SINGLE SEAT UNIT WITH UPHOLSTERED OUTSIDE BACK PANEL	OFS	Root shroud Champagne G2 cushion Blonde 027 back panel Gravel whi-2119 surround base	SEATING	1	\$13,430	\$13,430	SCS Indoor Advantage Gold Certifications FSC® COC Certified	12 59 83 – Custom Systems Furniture	https://ofs.com/products/seating/lounge/leant_o
		DOUBLE SEAT UNIT WITH UPHOLSTERED OUTSIDE BACK PANEL	OFS	Root shroud Champagne G2 cushion Blonde 027 back panel Gravel whi-2119 surround base	SEATING	1	\$11,611	\$11,611	SCS Indoor Advantage Gold Certifications FSC® COC Certified	12 59 83 – Custom Systems Furniture	https://ofs.com/products/seating/lounge/leant_o
		Fourlikes® Booth	Hightower		SEATING	1	\$17,505	\$17,505	Indoor Advantage Gold Certified	12 59 83 – Custom Systems Furniture	https://hightower.design/products/fourlikes-booth?variant=40435752337506
								SUBTOTAL	\$330,381		
								TOTAL AFTER DISCOUNT	\$247,786		

HAND SKETCHING, AUTOCAD

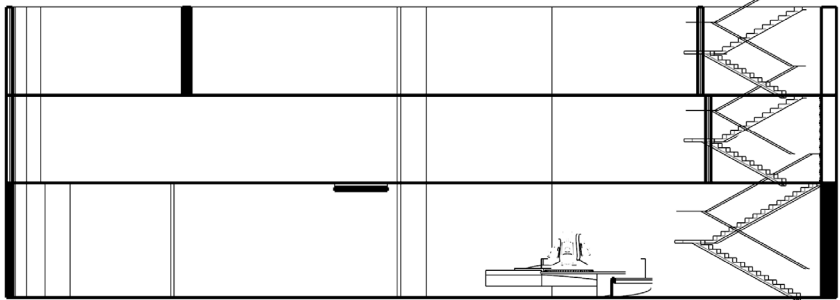
BUBBLE DIAGRAM



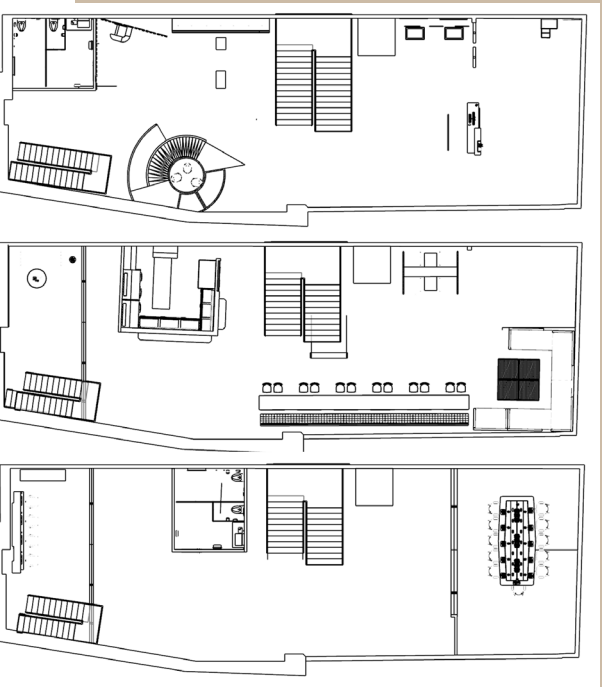
BLOCK DIAGRAM



SECTION VIEW



SCHEMATICS



TRADE CENTER CONCEPT
DOMINICAN INFLUENCE

FL 1 PERSEPECTIVE



FL 2 PERSEPECTIVE



FL 3 PERSEPECTIVE



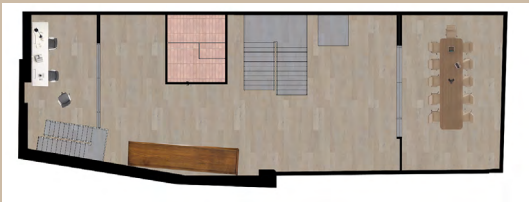
FL 1 POCHE



FL 2 POCHE



FL 3 POCHE



FL 1 MATERIALITY



FL 2 MATERIALITY



FL 3 MATERIALITY



TRADE CENTER CONCEPT DOMINICAN INFLUENCE

ADOBE PHOTOSHOP, AUTOCAD, ENSCAPE, SKETCHUP

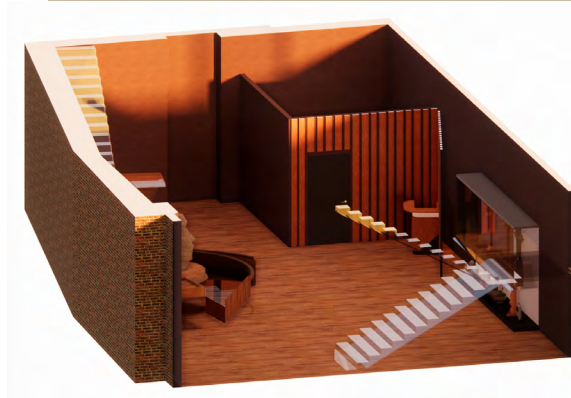
NORTH SECTION CUT



SOUTH SECTION CUT



FL 1 PERSEPECTIVE



FL 1 PERSEPECTIVE



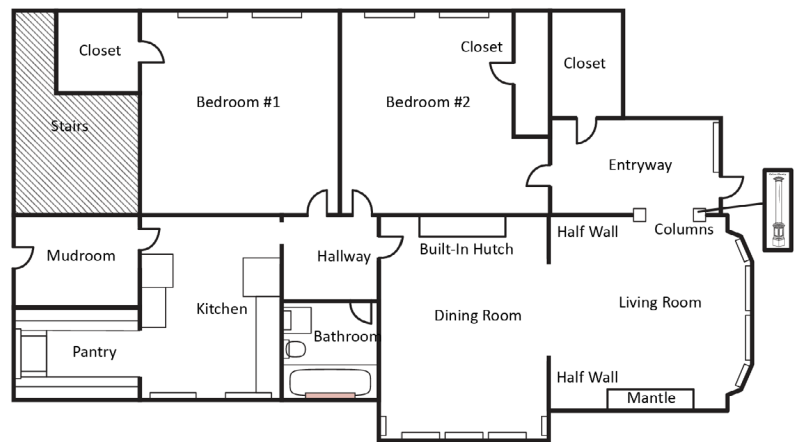
FL 1 PERSEPECTIVE



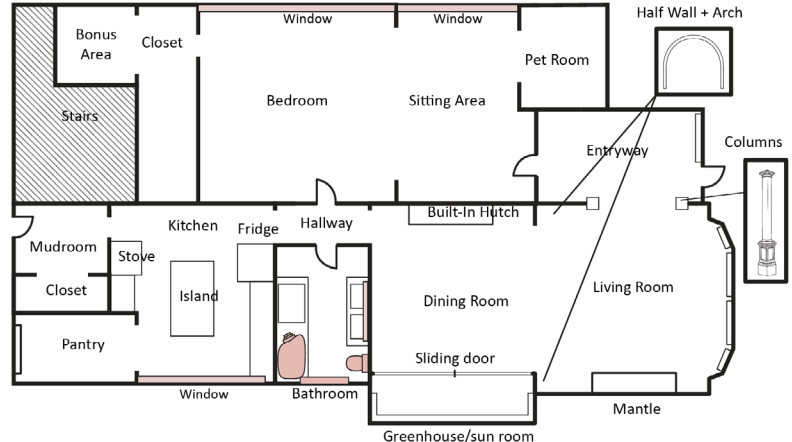
TRADE CENTER CONCEPT DOMINICAN INFLUENCE

APARTMENT RE-DESIGN
MODERN IMPROVEMENT

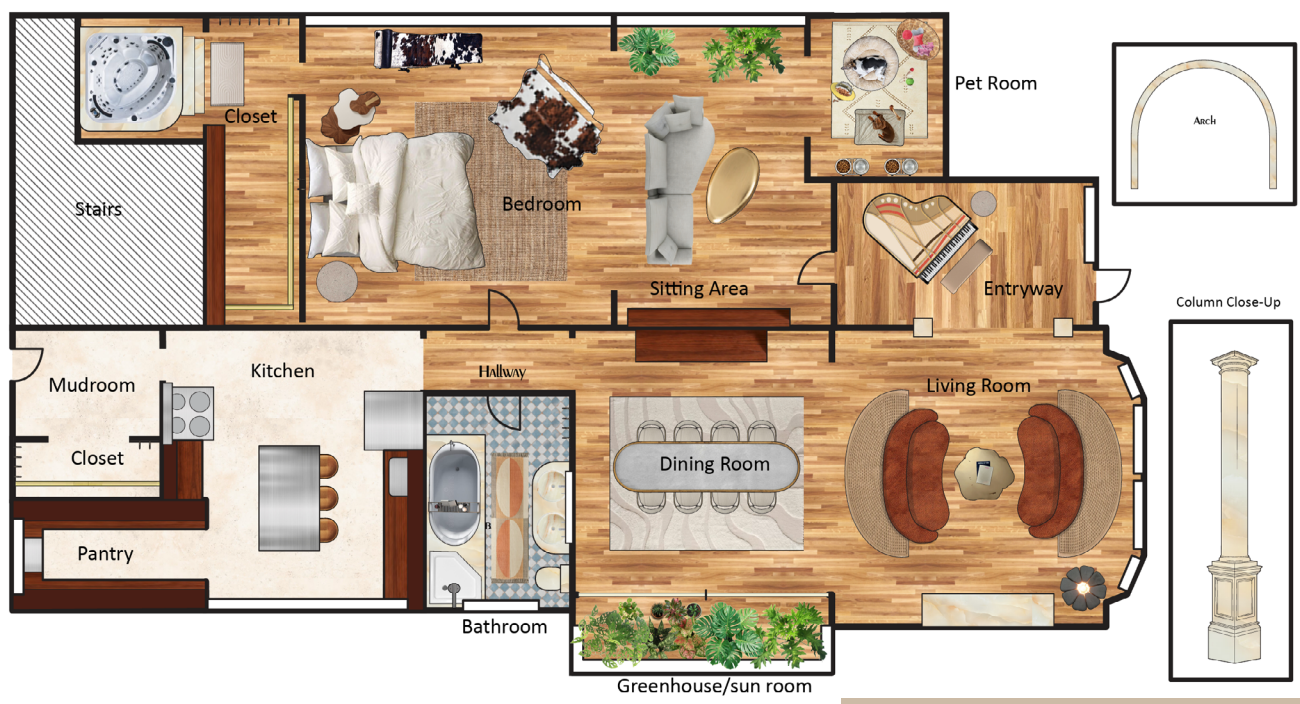
ORIGINAL FLOOR PLAN



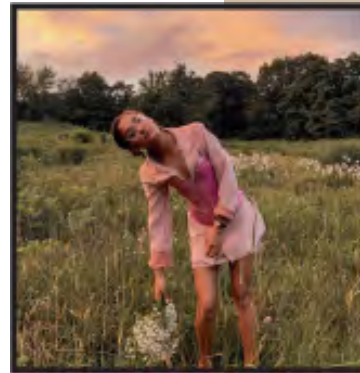
REMODELED FLOOR PLAN



REMODELED FLOOR PLAN - FURNISHED



HAND SKETCHING, ADOBE PHOTOSHOP, PHYSICAL RENDERING
MOODBOARD



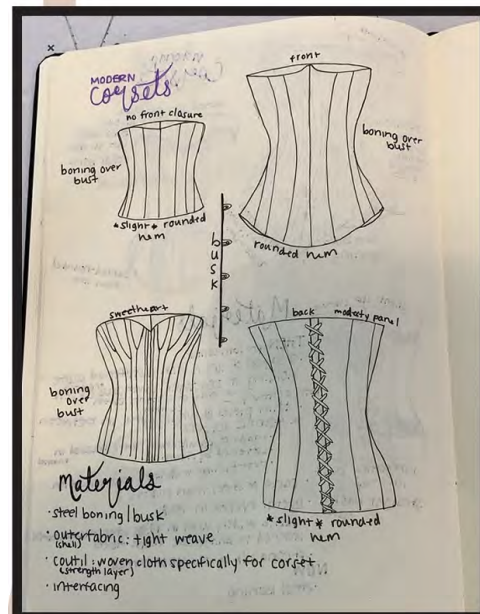
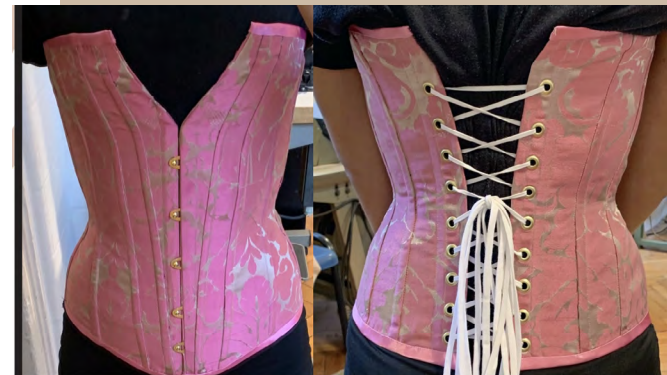
PROCESS



DETAIL



CORSET FITTING



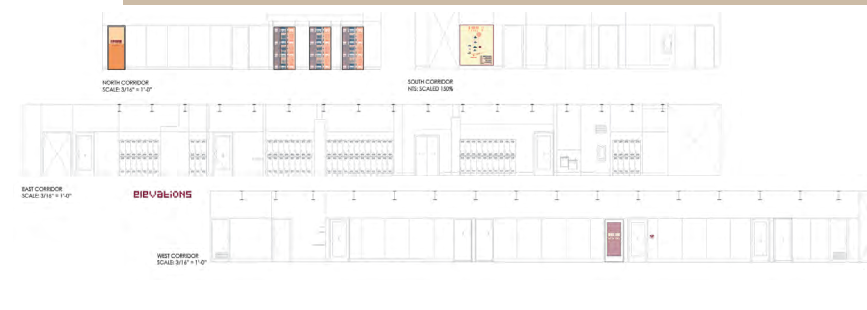
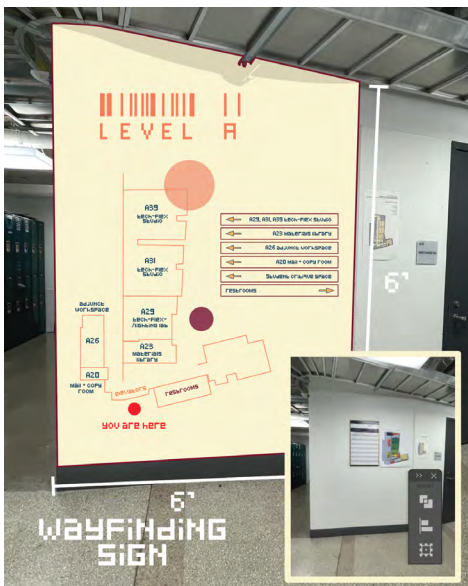
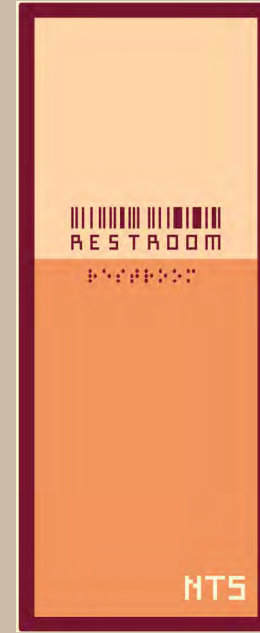
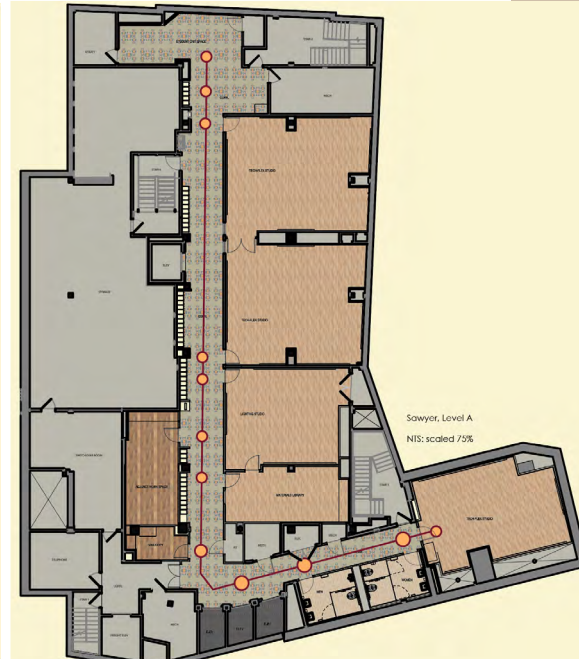
SKETCHES

FASHION DESIGN VICTORIAN CORSET

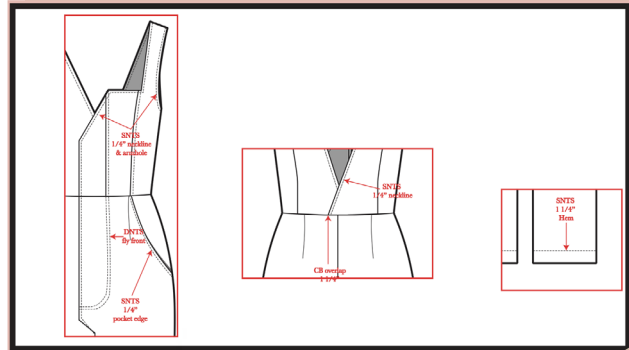
MBTA INSPIRATION

ADOBE PHOTOSHOP, ILLUSTRATOR

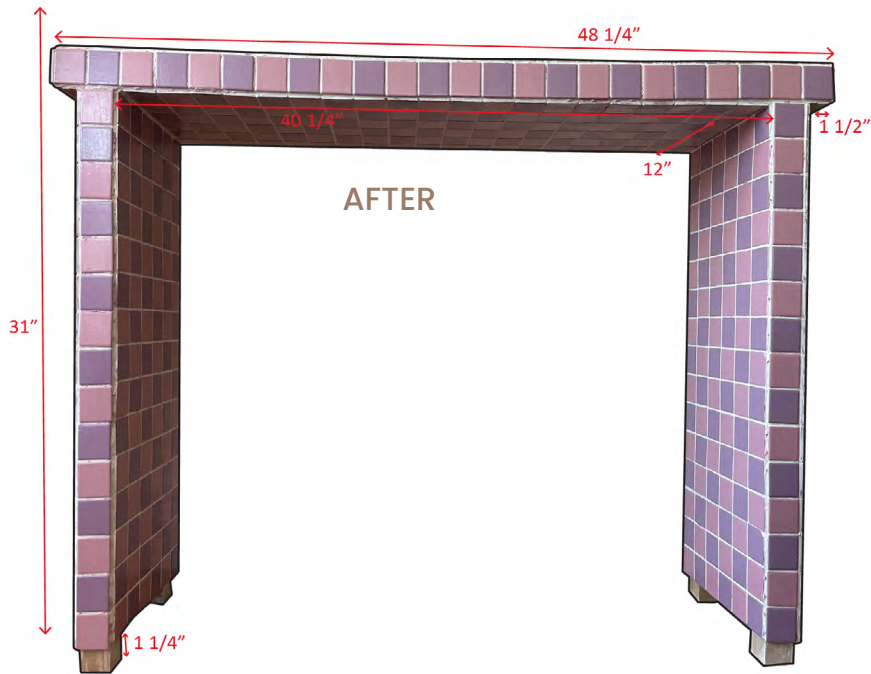
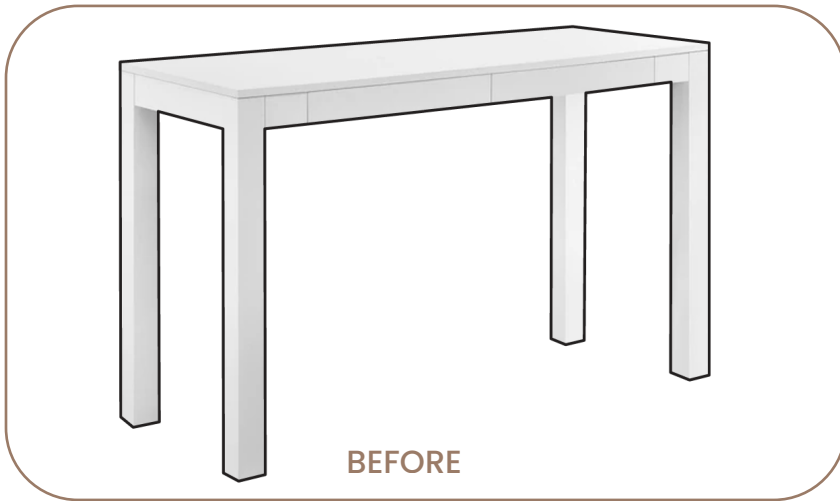
WAYFINDING INSTITUTIONAL CONCEPT



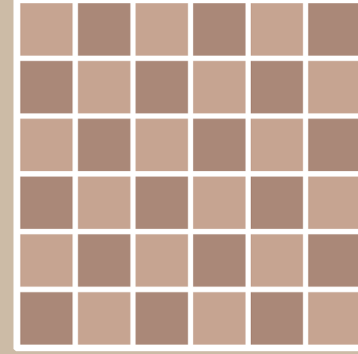
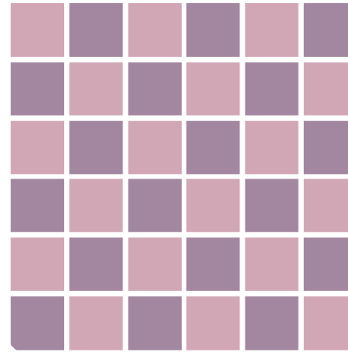
DIGITAL SKETCHING, ADOBE PHOTOSHOP, ILLUSTRATOR, LECTRA MODARIS, PHYSICAL RENDERING



FASHION DESIGN HOEM COLLECTION



PATTERN OPTIONS



ACTION STEPS

- 1) clean and prep surfaces
- 2) place tiles for alignment and dimensions
- 3) paint and varnish grey stone tiles with custom color mix
- 4) use tile adhesive to secure tiles to table
- 5) grout and clean with sponge
- 6) touch up tile paint
- 7) cut and attach wood for legs



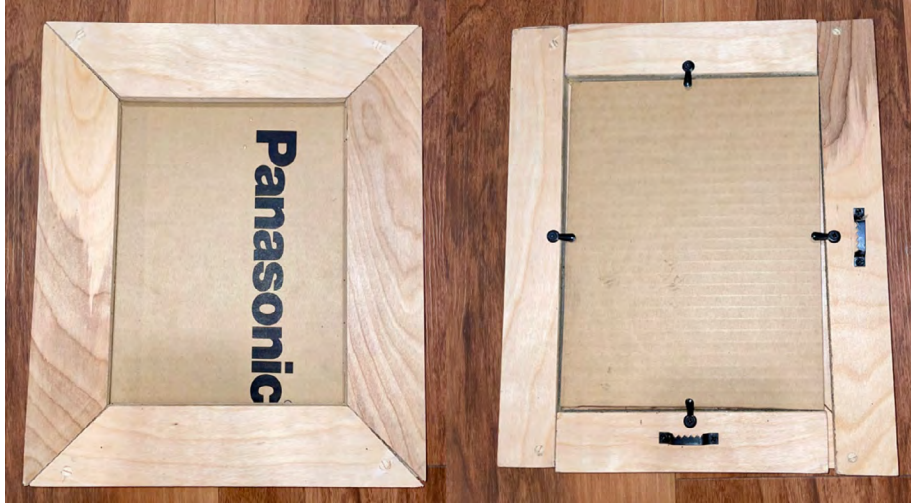
FURNITURE DESIGN TILE TABLE

ACCESSORY DESIGN PICTURE FRAME



SKETCH MODEL

SKETCHUP, PHYSICAL RENDERING



PHYSICAL MODEL

DIGITAL MODEL

